

# **BALDOR® • RELIANCE**

## **Product Information Packet**

### **L1204**

**.25HP,1140RPM,1PH,60HZ,48,3421L,OPEN,F1**

Product Detail							
Revision:	R	Status:	PRD/A	Change #:		Proprietary:	No
Type:	AC	Prod Type:	3421L	Elec. Spec:	34WG5613	CD Diagram:	CD0001
Enclosure	OPEN	Mfg Plant:		Mech Spec:	34F001	Layout:	34LYF001
Frame:	48	Mounting:	F1	Poles:	06	Created Date:	
Base:	RG	Rotation:	R	Insulation:	B	Eff. Date:	08-19-2008
Leads:	6#18	Literature:		Elec. Diagram:		Replaced By:	

**Nameplate NP1256L**

CAT.NO.	L1204						
SPEC.	34F01-5613						
HP	1/4						
VOLTS	115/230						
AMP	6.4/3.2						
RPM	1140						
FRAME	48	HZ	60	PH	1		
SER.F.	1.35	CODE	N	DES	N	CLASS	B
NEMA-NOM-EFF	48	PF	53				
RATING	40C AMB-CONT						
CC		USABLE AT 208V	3.6				
DE	6203	ODE	6203				
ENCL	OPEN	SN					
	SFA 6.8/3.4						

<b>Parts List</b>			
<b>Product ID</b>	<b>Description</b>	<b>Quantity</b>	<b>List Price</b>
SA007605	SA 34F01-5613	1.000	230.00
RA003992	RA 34F01-5613	1.000	192.00
NS2512A01	INSULATOR, CONDUIT BOX X X	1.000	3.00
34CB3002A	CB CAST W/.88 DIA HOLE	1.000	16.00
51XB1016A07	10-16 X 7/16 HXWSSLD SERTYB	2.000	3.00
11XW1032G06	10-32 X .38, TAPTITE II, HEX WSHR SLTD U	1.000	4.00
51XW0832A07	8-32 X .44, TAPTITE II, HEX WSHR SLTD SE	2.000	3.00
SP1006A01	TERM. BOARD, MODE 35 SW X H-23655	1.000	9.00
34EP3210A01SP	FR ENDPLATE, MACH	1.000	63.00
NS2500A01	INSULATOR, AUTO THER PROT	1.000	3.00
WD1000A03	41531 AMP FLG.TERM(4M/RL)1 MILLION PER Y	1.000	3.00
34CB4800SP	CAPACITOR COVER,STAMPED X X	1.000	24.00
51XB1016A05	10-16X5/16HX WA SL SR TYB (F/S)	2.000	3.00
HW5100A03SP	WAVY WASHER (W1543-017)	1.000	3.00
34EP3212A02	PU ENDPLATE, MODEL 34 OPEN	1.000	22.00
XY1032A02	10-32 HEX NUT DIRECTIONAL SERRATION	4.000	3.00
34CB4517	CB LID 4 MTG HOLES .22 DIA STAMPED, FOR	1.000	6.00
51XW0832A07	8-32 X .44, TAPTITE II, HEX WSHR SLTD SE	4.000	3.00
MG1000G27	PAINT- S9282E CHARCOAL GREY	0.014	4,000.00
10XF0440S02	04-40 X 1/8 TYPE F HEX HD STAINLESS STIC	2.000	2.00
EC1189A02SP	61B2D120189NNBA ELEC CAP, 189-227MFD, 12	1.000	28.00
SP5056A24	MODEL 34 TYPE L STATIONARY SWITCH WITH L	1.000	22.00
HA3100A44	THRUBOLT 10-32 X 8.000	4.000	3.00
LB1125C01	STD (STOCK) CARTON LABEL BALDOR WITH FLA	1.000	3.00

<b>Parts List (continued)</b>			
<b>Product ID</b>	<b>Description</b>	<b>Quantity</b>	<b>List Price</b>
LC0001A01	CONN LABEL / WARNING LABEL (LC0001 / LB1	1.000	3.00
NP1256L	NP STD LASER ENGRAVED, UL CSA CC, W/O TH	1.000	4.00
34PA1002	PACKING GROUP, BALDOR	1.000	16.00

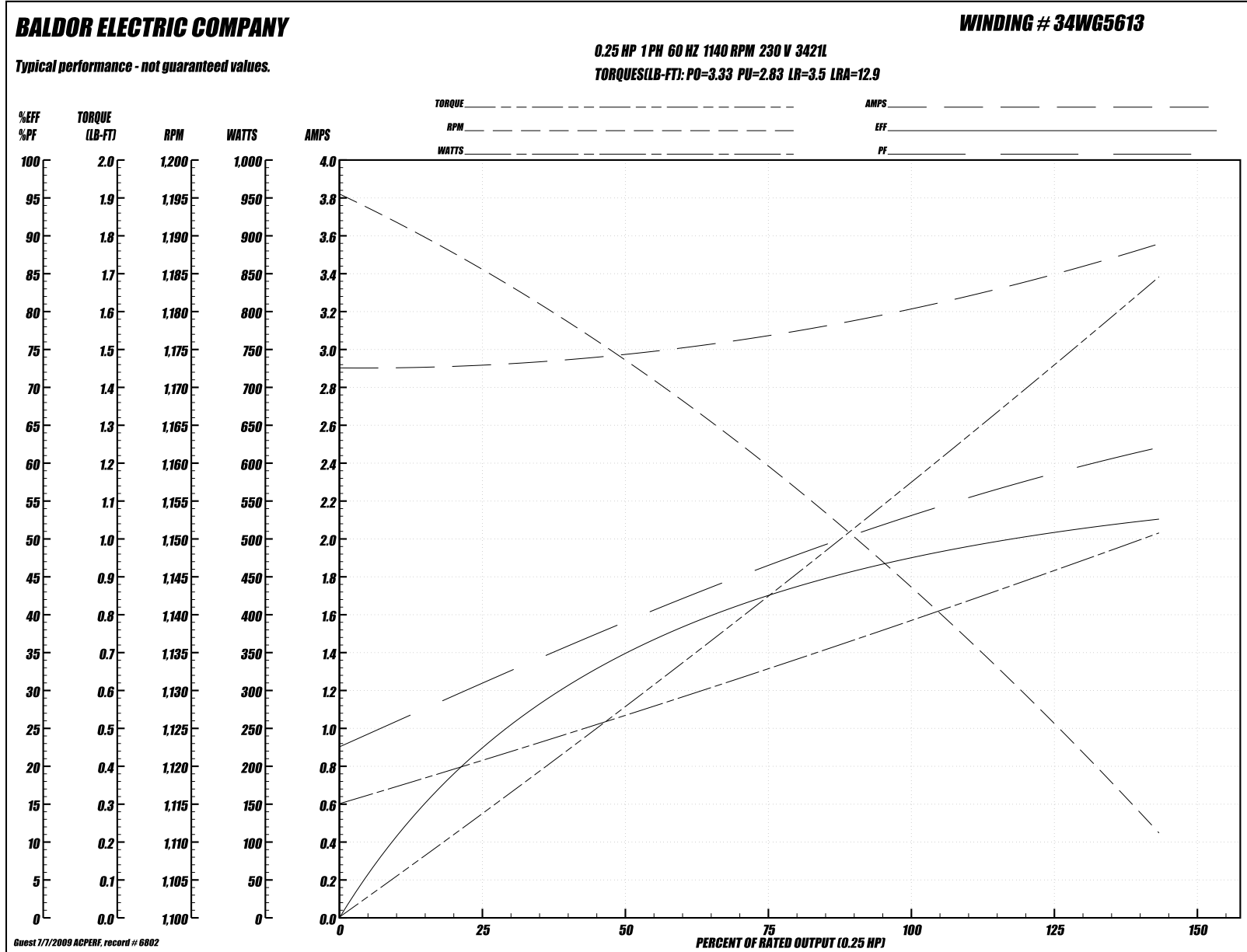
**Performance Data at 230V, 60Hz, 0.25HP (Typical performance - Not guaranteed values)**
**General Characteristics**

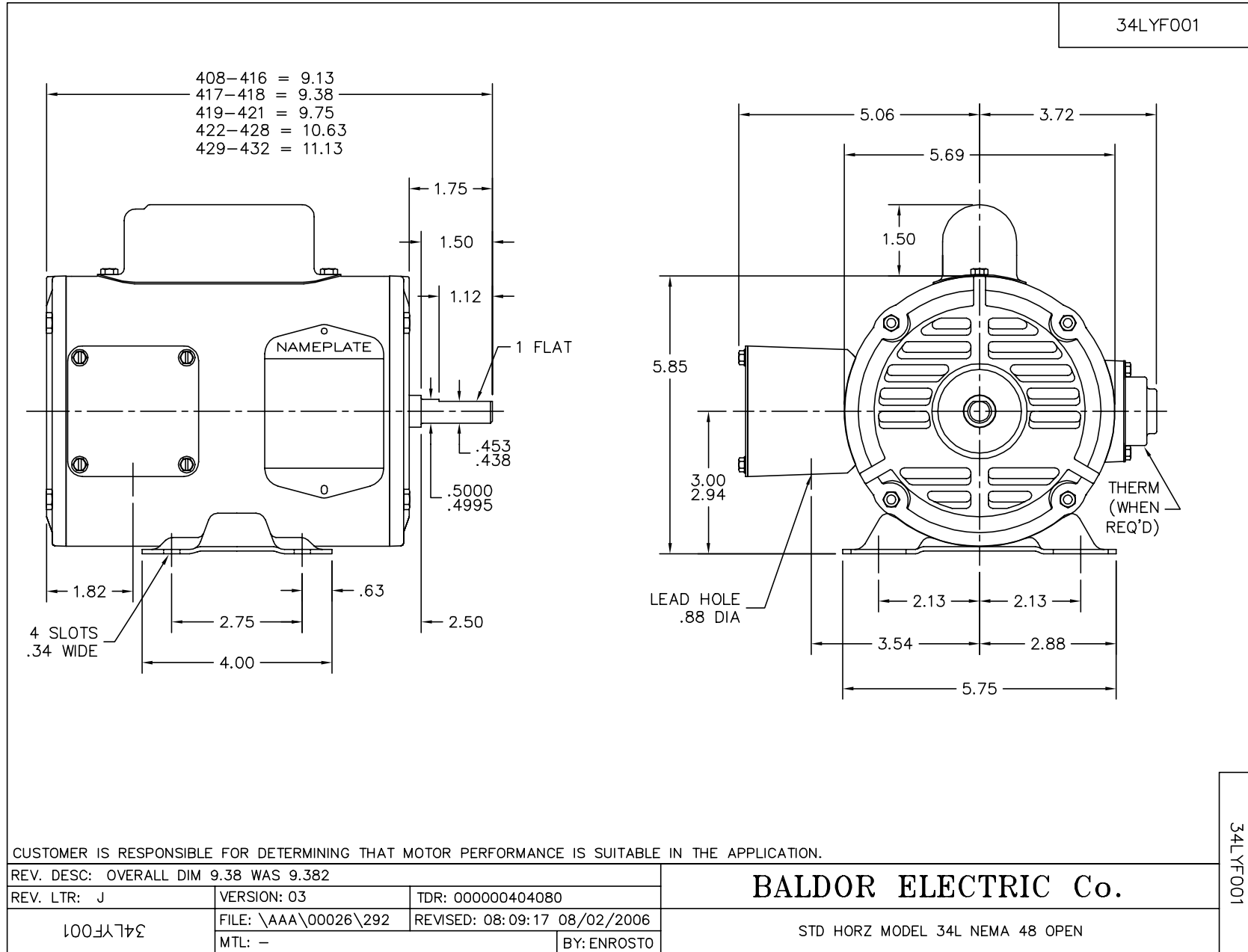
<b>Full Load Torque:</b>	1.13 LB-FT	<b>Start Configuration:</b>	DOL
<b>No-Load Current:</b>	2.9 Amps	<b>Break-Down Torque:</b>	3.33 LB-FT
<b>Line-line Res. @ 25°C.:</b>	8.08 Ohms A Ph / 6.68 Ohms B Ph	<b>Pull-Up Torque:</b>	2.83 LB-FT
<b>Temp. Rise @ Rated Load:</b>	62°C	<b>Locked-Rotor Torque:</b>	3.5 LB-FT
<b>Temp. Rise @ S.F. Load:</b>	74°C	<b>Starting Current:</b>	12.9 Amps

**Load Characteristics**

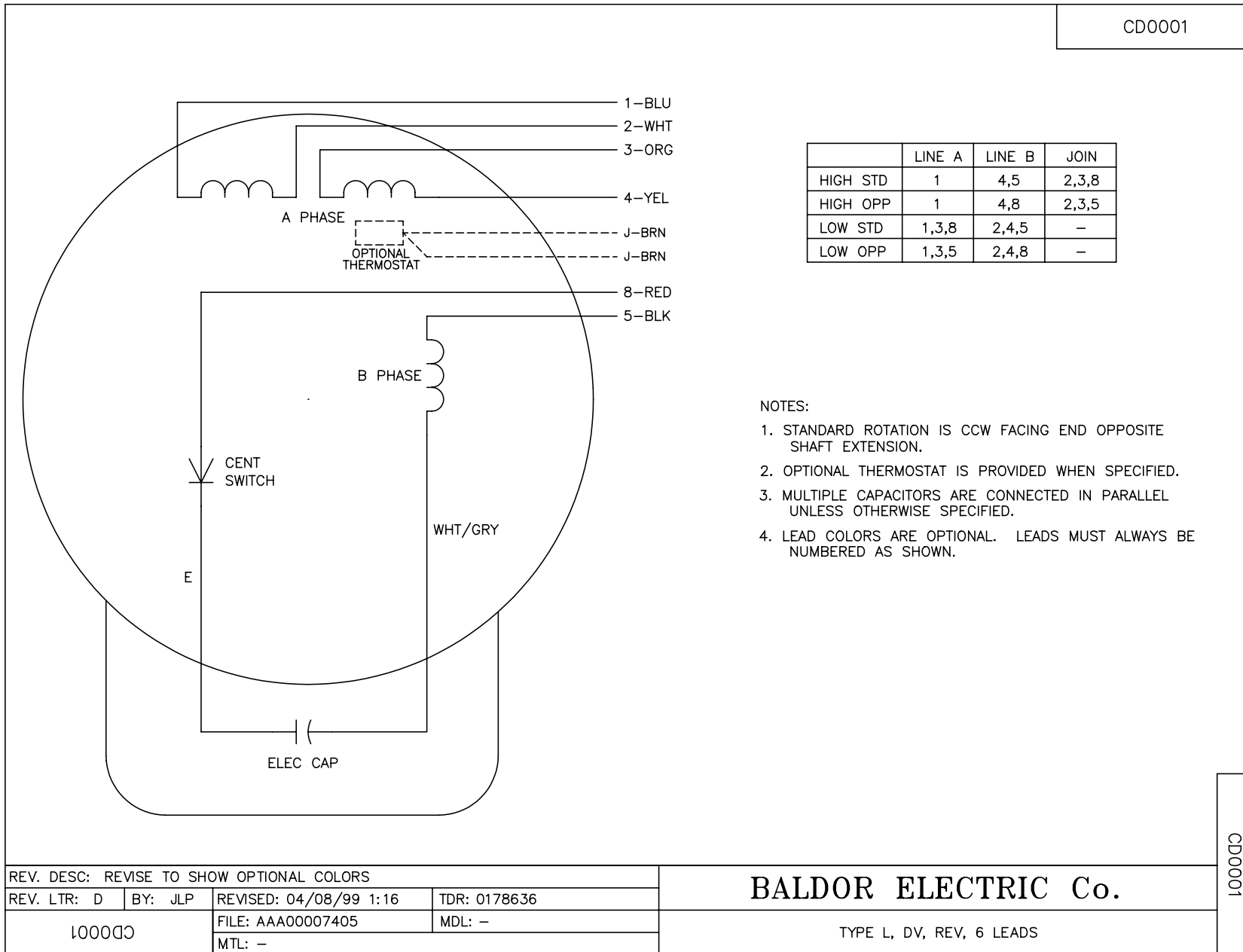
<b>% of Rated Load:</b>	<b>25</b>	<b>50</b>	<b>75</b>	<b>100</b>	<b>125</b>	<b>150</b>	<b>S.F.</b>
<b>Power Factor:</b>	32.0	39.0	47.0	53.0	59.0	65.0	63.0
<b>Efficiency:</b>	21.0	35.0	43.0	48.0	51.0	52.0	51.5
<b>Speed:</b>	1188.0	1170.0	1160.0	1145.0	1130.0	1110.0	1120.0
<b>Line Amperes:</b>	2.9	3.0	3.1	3.2	3.3	3.6	3.4

Performance Graph at 230V, 60Hz, 0.25HP (Typical performance - Not guaranteed values)





CD0001



NOTES:

1. STANDARD ROTATION IS CCW FACING END OPPOSITE SHAFT EXTENSION.
2. OPTIONAL THERMOSTAT IS PROVIDED WHEN SPECIFIED.
3. MULTIPLE CAPACITORS ARE CONNECTED IN PARALLEL UNLESS OTHERWISE SPECIFIED.
4. LEAD COLORS ARE OPTIONAL. LEADS MUST ALWAYS BE NUMBERED AS SHOWN.

REV. DESC: REVISE TO SHOW OPTIONAL COLORS			
REV. LTR: D	BY: JLP	REVISED: 04/08/99 1:16	TDR: 0178636
100000		FILE: AAA00007405	MDL: -
		MTL: -	

**BALDOR ELECTRIC Co.**

TYPE L, DV, REV, 6 LEADS

CD0001