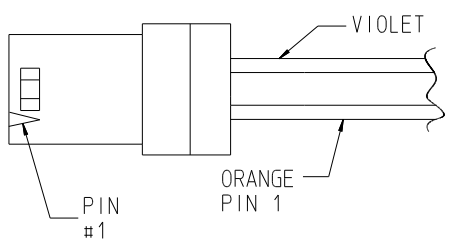
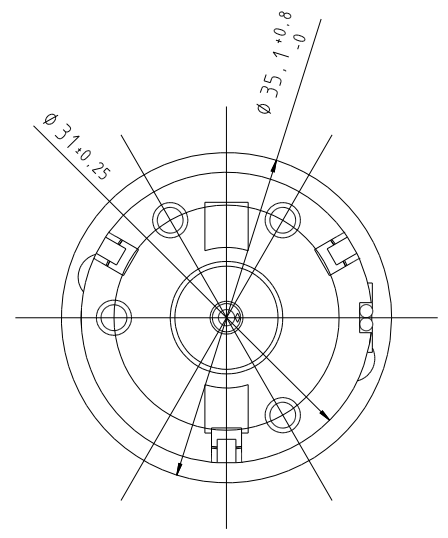
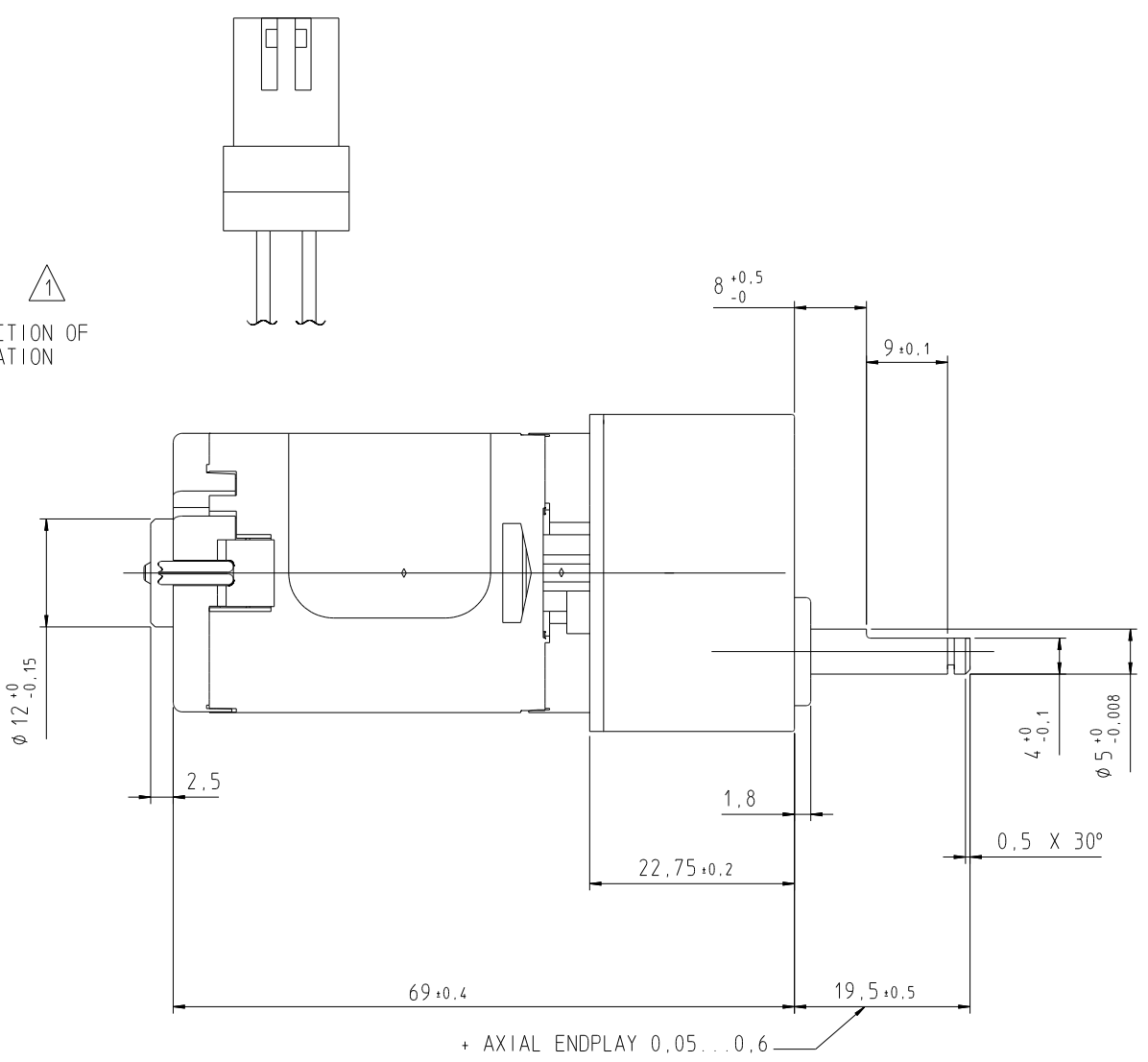
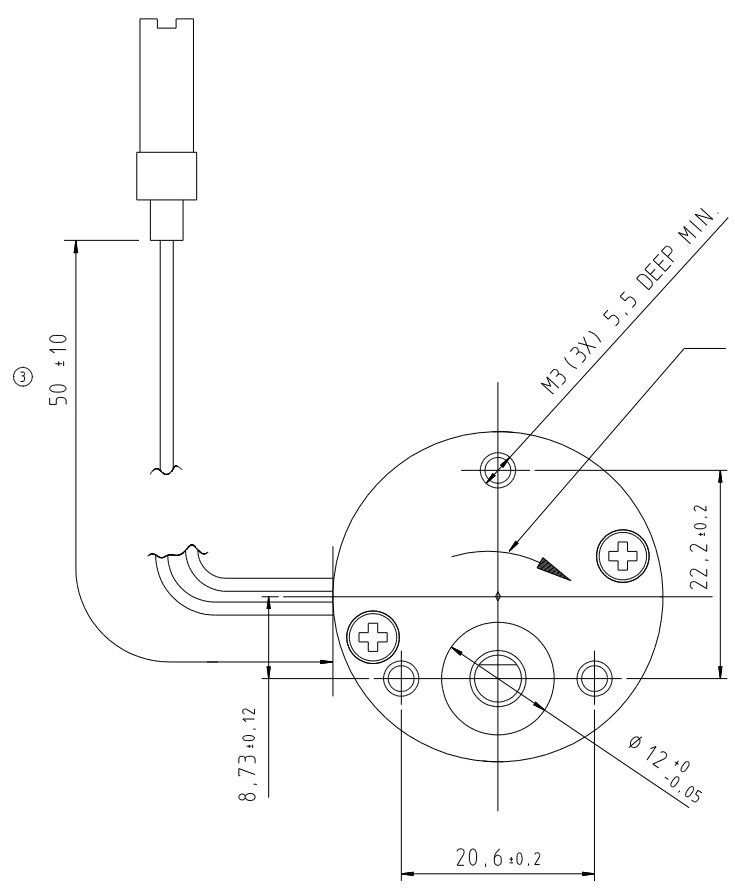


Tolerances Unless Otherwise Stated			Fillet radius and chamfer height			Surface Finish	Dimension	Tolerance
up to 6	over 6 up to 30	over 30 up to 120	up to 3	over 3 up to 6	over 6 up to 30			
+0,1	+0,2	+0,3	+0,2	+0,5	+1			

NOTES:
 ⚠ DIRECTION OF ROTATION WITH POSITIVE VOLTAGE APPLIED TO PIN #1 OF CONNECTOR (ORANGE LEAD).



GEAR RATIO 93:1
 U 24 VOLT- PI - KN 115

ISO-E		Material Number		Internal	
		X		X	
BUEHLER PRODUCTS INC. CARY, NC 27512		Date	17JUN97	Substituted For	
		Drawn	HERRING		
		Check	JEH	Replaced By	
		Appr.			
Title: GEAR MOTOR DIMENSIONS Scale: 2:1					
Exper. No. -					
Drawing Number: 7.27.253.KN (2) Sheet 1 of 1					
3	REVISED PER ECO 3717-151	16MAY00	JEH		
2	REVISED PER ECO 3869-206	01DEC99	JEH		
1	RELEASE PER ECO 3869-126	17JUN97	JEH		
DI	Change Only With CAD	Date	Name	Use	

THIS DOCUMENT AND ALL INFORMATION THEREIN CONTAINED ARE OUR EXCLUSIVE PROPERTY. THE RECIPIENT AGREES NOT TO REPRODUCE, COPY, USE OR TRANSMIT THIS DOCUMENT AND/OR THE INFORMATION THEREIN CONTAINED FOR ANY PURPOSE, EXCEPT WITH OUR WRITTEN PERMISSION.

FÜR DIESE ZEICHNUNG BEHALTEN WIR UNS ALLE RECHTE NACH DIN 34 FÜR DRAUGHTING CREATED WITH ISO STANDARDS

