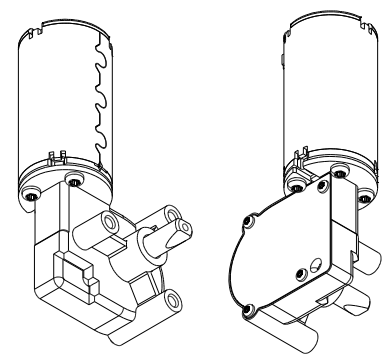
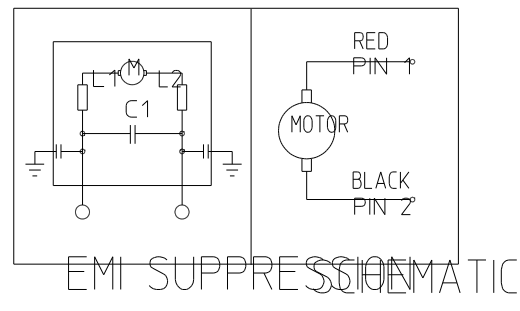
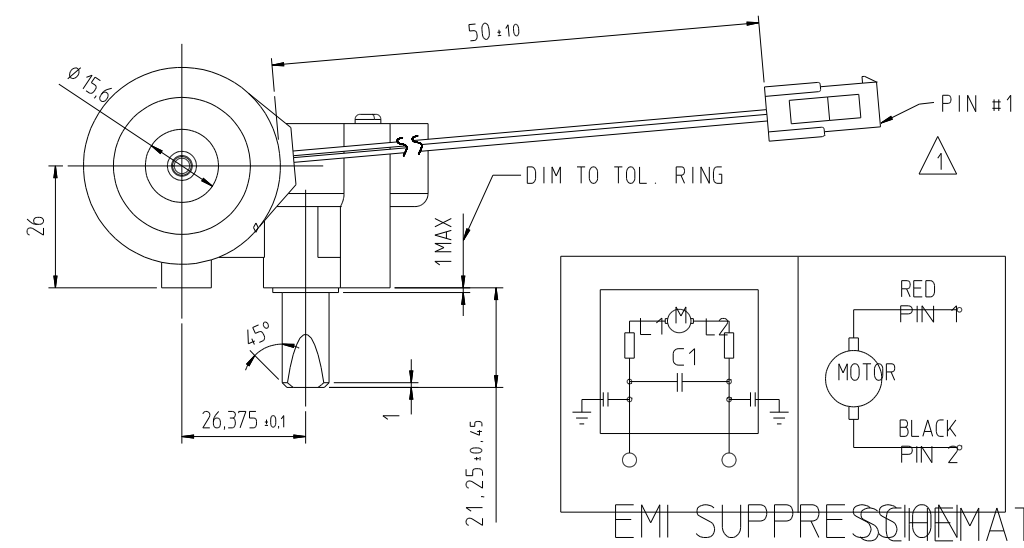
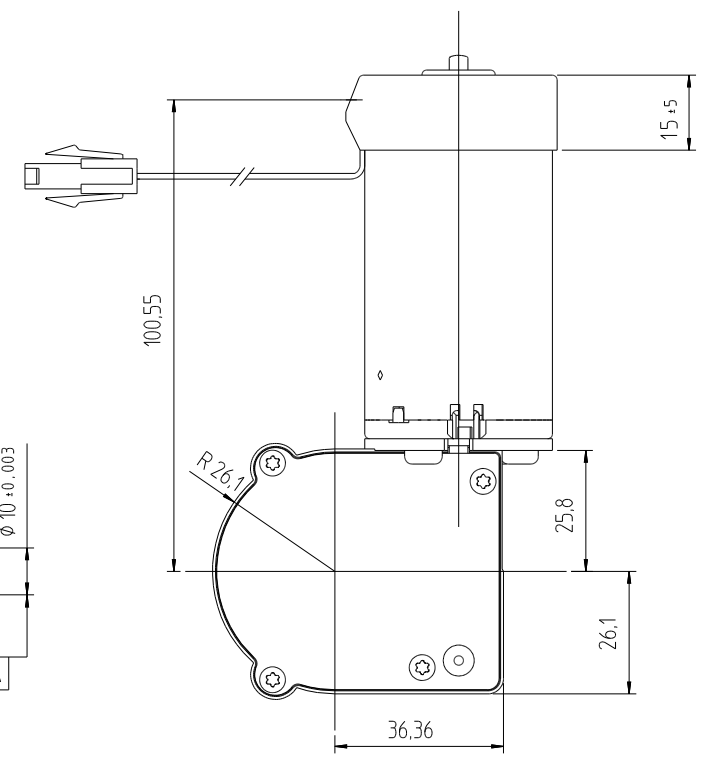
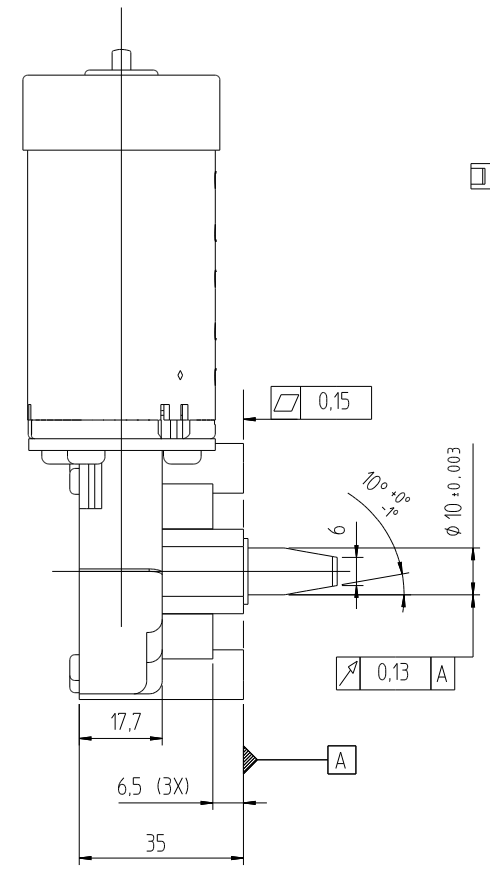
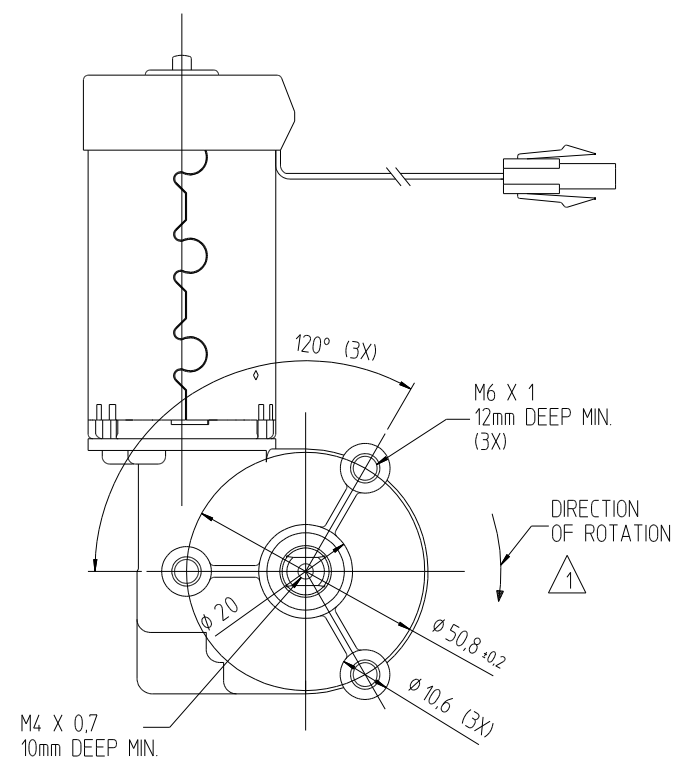


Tolerances Unless Otherwise Stated			Tolerances of Angle (Shortside of Angle)			Surface Finish	Dimension	Tolerance
up to 6	over 6 up to 30	over 30 up to 120	up to 10	over 10 up to 50	over 50 up to 100			
+0,1	+0,2	+0,3	+1°	+30'	+20'			

NOTES:

① DIRECTION OF ROTATION WITH POSITIVE VOLTAGE APPLIED TO PIN #1.



B		108	
PI		KN	
ISO-E		Internal	
Material Number		B	X
Date		X	X
BUEHLER PRODUCTS INC. RALEIGH, NC 27636		Substituted For	
Drawn HERRING		Replaced By	
Check JEH			
Appr.			
Title MOTOR DIMENSION			Scale 1:1
Exper. No.			0.5:1
Drawing Number 7.27.199.KN (2)			Sheet 1 of 1
DI	Change Only With CAD	Date	Name
Use			

Für diese Zeichnung behalten wir uns alle Rechte nach DIN 34 für.

DRAWING CREATED WITH ISO STANDARDS

THIS DOCUMENT AND ALL INFORMATION THEREIN CONTAINED ARE OUR EXCLUSIVE PROPERTY. THE RECIPIENT AGREES NOT TO REPRODUCE, COPY, USE OR TRANSMIT THIS DOCUMENT AND/OR THE INFORMATION THEREIN CONTAINED FOR ANY PURPOSE, EXCEPT WITH OUR WRITTEN PERMISSION.

30mm

Für diese Zeichnung behalten wir uns alle Rechte nach DIN 34. für.

DRAWING CREATED WITH ISO STANDARDS

THIS DOCUMENT AND ALL INFORMATION THEREIN CONTAINED ARE OUR EXCLUSIVE PROPERTY. THE RECIPIENT AGREES NOT TO REPRODUCE COPY, USE OR TRANSMIT THIS DOCUMENT, AND/OR THE INFORMATION THEREIN CONTAINED FOR ANY PURPOSE, EXCEPT WITH OUR WRITTEN PERMISSION.

1			2			3				
Tolerances Unless Otherwise Stated			Tolerances of Angle (Shortside of Angle)			Surface Finish			Dimension	Tolerance
up to 6	over 6 up to 30	over 30 up to 120	up to 10	over 10 up to 50	over 50 up to 100					
±0.1	±0.2	±0.3	±1°	±30'	±20'					

SCOPE

THIS SPECIFICATION APPLIES TO A D.C. RIGHT ANGLE GEARMOTOR.

GENERAL

1. REFERENCE XEROX SPEC. 127K22180 FOR CUSTOMER SPECIFIC REQUIREMENTS.
2. REFERENCE BMI MOTOR PERFORMANCE SPEC. 7.13.170.247.

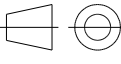

MECHANICAL

1. DIRECTION OF OUTPUT SHAFT ROTATION IS CW WITH POSITIVE VOLTAGE APPLIED TO PIN #1 (RED LEAD) W.R.T PIN #2 (BLACK LEAD)
2. REFERENCE BMI 7.27.199.108 FOR DIMENSIONS.

ELECTRICAL

1. NO LOAD PERFORMANCE - VOLTAGE = 25,2 VDC  
SPEED = 345 max./ 285 MIN.  
CURRENT = 250 mA max.
2. PERFORMANCE AT LOAD OF 54 Ncm - VOLTAGE = 25,2 VDC  
SPEED = 240 - 268 RPM  
CURRENT = 1.285 A MAX.

-	108
PI	KN

						Internal			
				ISO-E		B	X		
					Material Number	X	X		
					BUHLER PRODUCTS INC. RALEIGH, NC 27636	Date	29AUG96		
						Drawn	HERRING		
						Check	JEH		
						Appr.	-		
5	DELETE SH. 2 PER ECO 3717-151	16MAY00	JEH	Title	SPECIFICATION			Scale	N/A
4	REVISED PER ECO 3787-14	13NOV98	MCH	Exper. No.	-			Sheet	1
3	REVISED PER ECO 3851-61	25JUN97	JEH	Drawing Number	7.13.128.KN (4)			of	1
2	REVISED PER ECO 3851-56	24MAR97	JEH		6131	-	-	-	-
1	RELEASED PER ECO 3851-29	29AUG96	JEH						
DI	Change Only With CAD	Date	Name	Use					