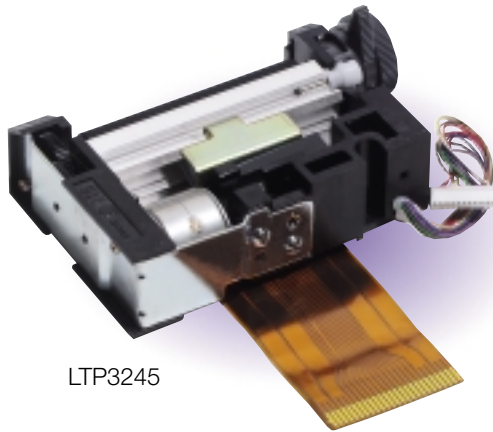


LTP Series

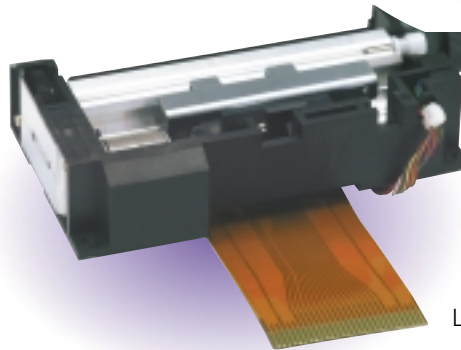
LTP3000 SERIES PRINTERS

The LTP3000 Series thermal line printers combine a compact, lightweight battery-powered design with an array of advanced features. This series is the ideal thermal printing solution for any application where small size, speed, versatility and low-power consumption are critical. Aside from being efficient, economical and dependable, the LTP3000 Series printers feature 5 volt operation and a power-saving design that supports virtually any application requiring portable, battery-powered thermal printing.

- High speed (56.25mm/sec. attainable with LTP3445)
- High resolution printing (8 dots/mm)
- Low voltage operation
- Accepts two-ply and label media
- Head-up and paper-out sensors
- High reliability
- Quiet operation



LTP3245



LTP3345



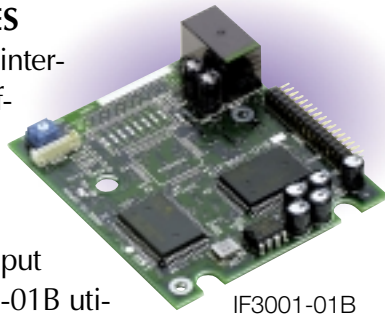
LTP3445

Model		LTP3245B/D	LTP3245F	LTP3345	LTP3445	
Printing	Method	Thermal line dot system				
	No. of dots/line	384		576	832	
	No. of characters/line	24		36	52	
	Width (mm)	48		72	104	
	Resolution	8 dots/mm				
	Paper feed pitch (mm)	0.125				
	Speed (mm/s)	22.5 @ 5VDC	27 @ 5VDC, 54.5 @ 7VDC		25 @ 5VDC, 45 @ 7VDC	20 @ 5VDC, 50 @ 7.2VDC
	Speed (cl/s)	4.5 @ 5VDC	5.4 @ 5VDC, 10.9 @ 7VDC		5 @ 5VDC, 9 @ 7VDC	4 @ 5VDC, 10 @ 7.2VDC
Detection	Head temperature	By thermistor				
	Paper out detection	By photo interrupter				
	Head up detection	By mechanical switch				
Dimensions (WxDxH) mm	76.3 x 50.0 x 20.0	76.0 x 54.5 x 21.0	97.0 x 57.0 x 21.0		130 x 51 x 21	
Weight (g)	Approx. 80	107	115		135	
Power supply	Operating voltage	4.2 to 6.0 VDC		4.2 to 7.0 VDC		4.2 to 8.5 VDC
	Current consumption	Max. 2.54 @ 5 VDC 64 dots		Max. 2.5A @ 5 VDC 64 dots		1.8A @ 5 VDC
Service life	Pulse activation	20 million character-lines or more (25% print ratio)				
	Abrasion resistance	100km		100km or more		
Operating temperature (°C)	0 to 50					
Storage environment (°C)	-20 to 60					
Paper	Width (mm)	58 +0/-1		80 +0/-1	112 +0/-1	
	Path	Straight or curve	Straight		Straight or curve	
	Thickness (µm)	65 ± 5				

INTERFACE BOARD & CPU

IF3001-01B INTERFACE BOARD FOR LTP3000 SERIES

The IF3001-01B is an interface board used specifically for the LTP3245 B/D. It is equipped with 8-bit parallel and serial RS-232C data input terminals. The IF3001-01B utilizes its full printing capacity by supporting a wide variety of characters and function commands, including graphics, inverted, expanded and test print.



IF3002-01B INTERFACE BOARD FOR LTP3000 SERIES

The IF3002-01B interface board drives the LTP3345 printer mechanism and prints both 16-dot and 24-dot ANK, including graphics, inverted, expanded and test print. Since it measures the head resistance,



temperature and voltage, applied energy adjustments are not necessary. The IF3002-01B is well suited for battery power, which requires very little energy to drive the printer and can be powered by environmentally-friendly Ni-MH batteries.

CPU FOR LTP3000 SERIES

(PT300P01, PT301P01, PT303P01, PT304P01)

- Prints with less current using division control in accordance with the number of dots to be activated
- Supports both parallel and serial input.
- Ensures high quality printing by measuring the temperature and voltage and automatically adjusts the print density
- Provides a wide variety of character functions including double-width/double-height, inverse print, underlining and character spacing control
- Superimposes characters and bit image data
- Provides a ruler line function, enabling ruler lines and characters to be easily integrated
- Prints on two-ply thermal paper

Model	IF3001-01B	IF3002-01B
Applicable mechanism	LTP3245 B/D	LTP3345
CPU	PT300P01	PT303P01
Input control method	8-bit parallel (modified Centronics)	
	Serial (RS-232C)	Serial (TTL level)
Character type	IBM compatible character set: 222 characters Japanese Kana character set: 126 characters	Extended graphics character set / Option font Downloaded character / User-defined character
Dimensions (WxDxH) mm	67 x 75 x 20	80 x 80 x 18
Weight (g)	40	45
Operating voltage (Vcc)	5VDC ± 0.5	
Current consumption (Icc)	Max. 90 mA @ 5V (standby) Max. 150 mA @ 5V (printing)	Max. 15 mA @ 5V (standby) Max. 200 mA @ 5V (printing)
Operating temperature (°C)	0 to 50	
Storage temperature (°C)	-20 to 60	

Model	PT300P01	PT303P01		PT301P01	PT303P01	PT304P01
Applicable mechanism	LTP 3245 B/D	LTP 3245 B/D	LTP3245 F	LTP3345		LTP3445
Package form	64-pin flat package			80-pin flat package		
Dimensions (WxDxH) mm	23.6 x 17.6 x 2.7			22.8 x 16.8 x 3.05		
Configuration	C-MOS LSI					
Input method	8-bit parallel (Centronics), Asynchronous serial					
Operating voltage (Vcc)	5VDC ± 0.5					
Operating frequency (MHz)	14.75 ± 0.5%			16.0 ± 0.5%		
Remark	Use this CPU and a gate array (PT500GA1) as a pair					